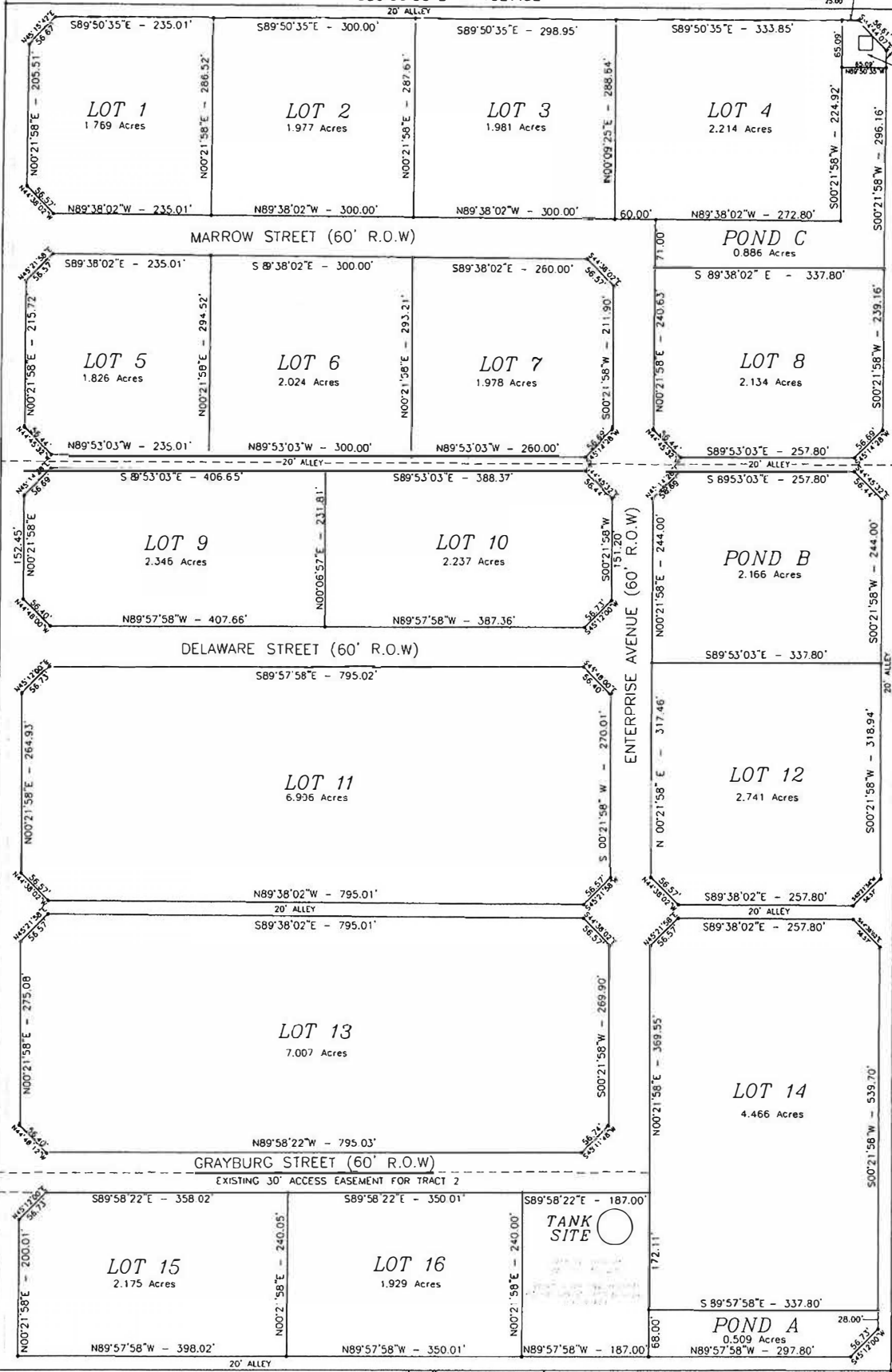


S89°50'35"E - 1327.82'



LIFT STATION  
0.079 Acres



BETTY COLWELL

671.26'

670.31'

N00°21'58"E - 1342.51'

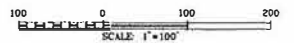
S00°21'58"W - 1340.61'

SECTION 32  
SECTION 33

N89°57'58"E - 1327.83'

CITY OF ARTESIA  
BLOCK 3 REPLAT INDUSTRIAL PARK OF ARTESIA  
PHASE III  
(BK. 455, PG. 407)

LEGEND  
● - DENOTES SET 1/2" STL. W/OC MKD "17777"



HARCROW SURVEYING, LLC  
2314 W. MAIN ST. ARTESIA, N.M. 82210  
PH: (575) 746-2158 FAX: (575) 746-2154  
ch.harcrow@harcrow-surveying.com



SURVEY DATE	MARCH 2015
DRAFTING DATE	APRIL 1, 2015
APPROVED BY: CH	DRAWN BY: VD
PAGE: 2 OF 2	FILE: 15-420